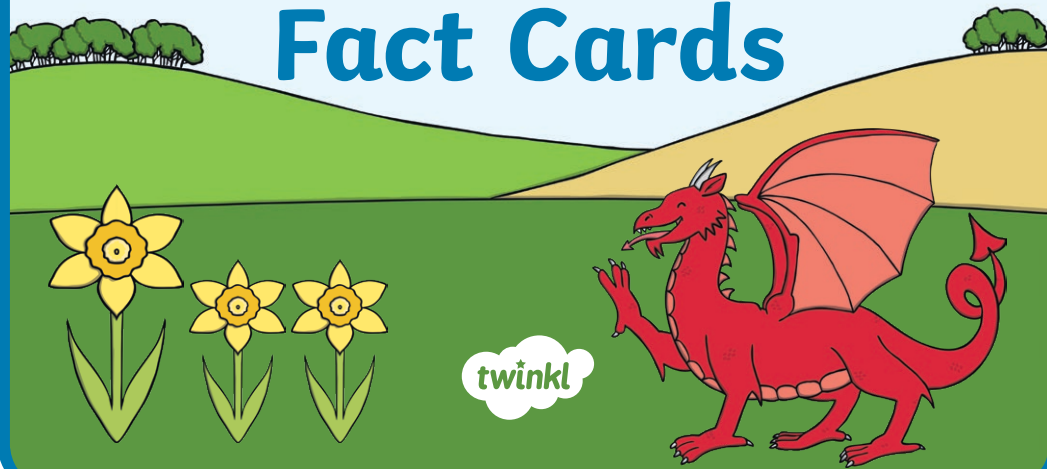


Wales

Fact Cards



Wales Fact Cards



The capital city of Wales is Cardiff.

Wales Fact Cards

The Welsh flag is the 'Red Dragon'.



Wales Fact Cards



Other main cities in Wales include Swansea, Bangor, Newport and St David's.

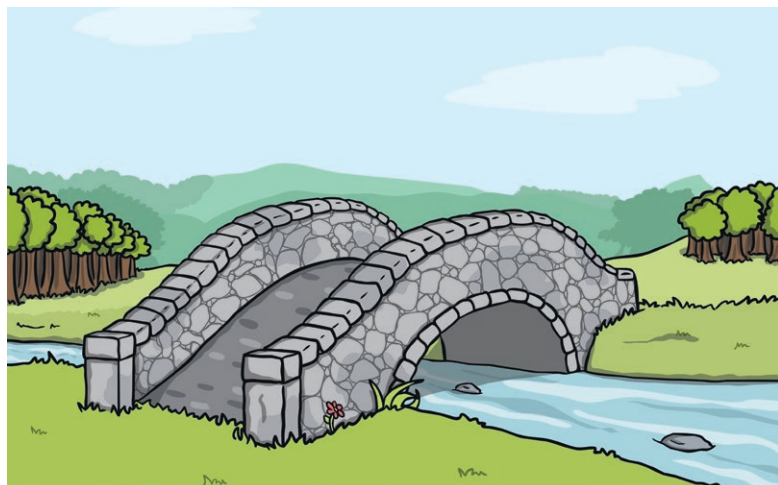
Mount Snowdon is the highest point at 1085m.



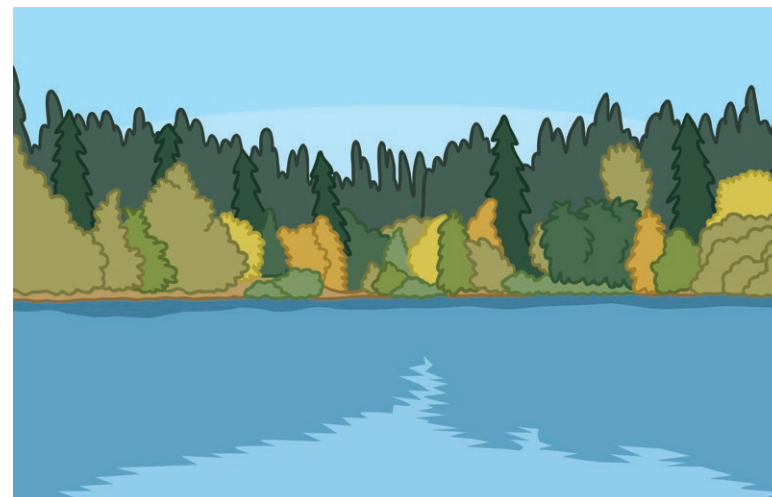
Famous Welsh people include Roald Dahl, Dylan Thomas and George Everest.



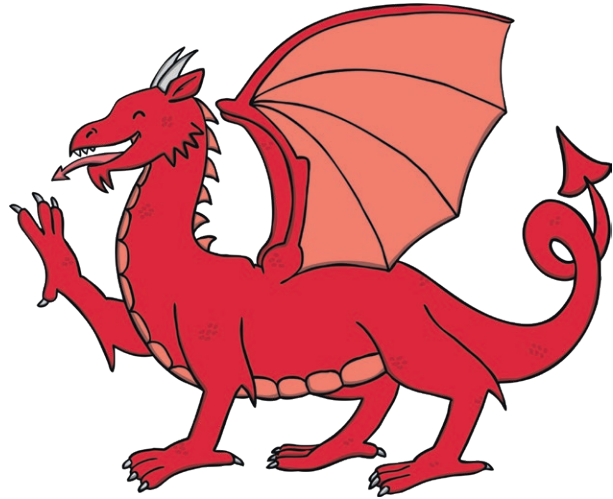
The River Towy is the longest river in Wales.



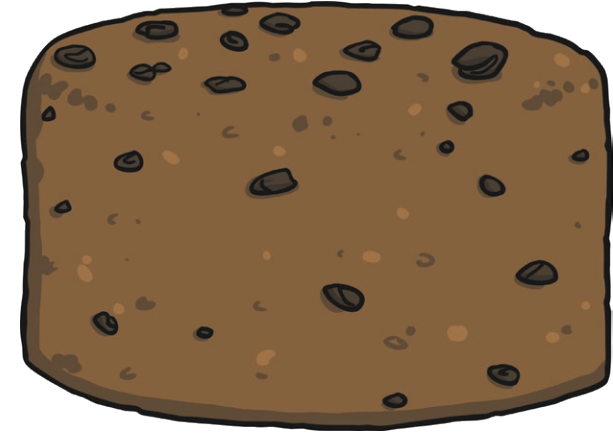
The largest lake is Lake Bala.



The Welsh national animal is the dragon.



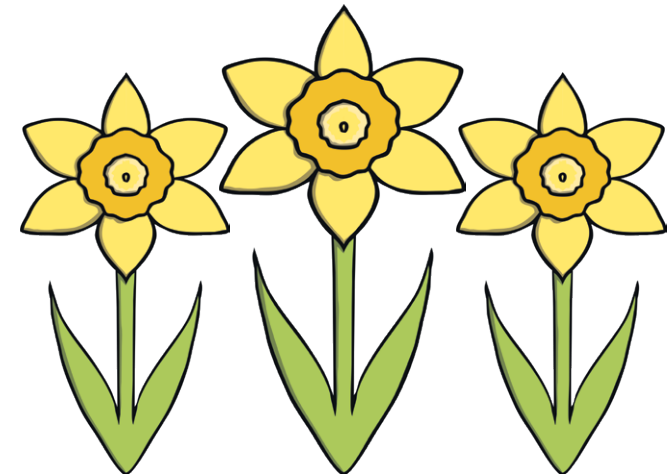
Traditional Welsh foods include laverbread, bara brith (fruit cake) and Welsh rarebit.



The two languages of Wales are Welsh and English.



The national symbol of Wales is the daffodil.



Rugby is the most popular sport in Wales.

