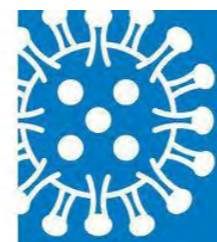


Social Distancing Measures In Place

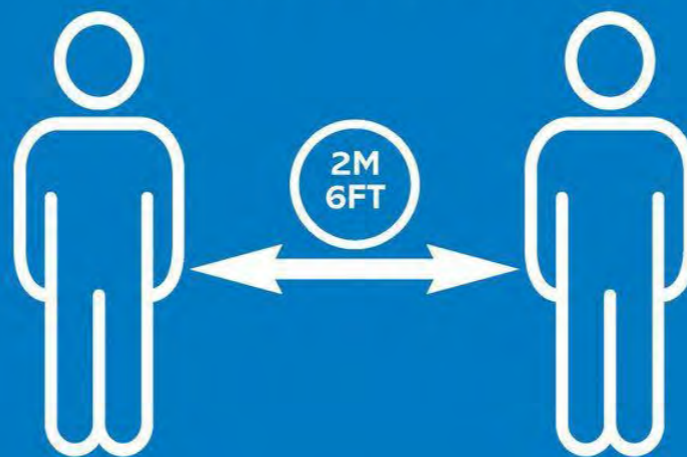


Please keep a minimum of 2 metres distance whenever possible



SOCIAL DISTANCING

PLEASE MAINTAIN A SAFE DISTANCE OF 2M (6FT)



— STOP THE SPREAD —
PROTECT YOURSELF AND OTHERS.

COVID-19 INFORMATION

Please be assured, we are doing everything possible to keep our customers and staff safe.

To help us, please adhere to the following guidelines.



Keep your distance

Practice social distancing. Keep 1m distance at all times.



Avoid touching your face

Don't touch your eyes, nose or mouth.



Coughing

Cough into a tissue and dispose, or cough into your elbow.



Wash your hands

Use hand sanitiser or wash your hands with soap for 20 seconds.



Showing symptoms?

Stay at home and self isolate.



What **YOU** should do for an **Emergency Warning**

When UNC sounds the sirens and sends an emergency text message to registered cell phones, police have confirmed a major emergency or an immediate safety or health threat on campus.

It's a life-threatening situation; the campus is under an emergency alert status.

STOP classroom and campus activities.

All UNC operations are temporarily suspended, including classes, business in offices and public transportation.

REMAIN inside your classroom or a safe place in your building.

Close windows and doors. Wait until further notice.

For an armed and dangerous person in your building, evacuate to another nearby building if you can do so safely (get out). If you can't safely evacuate stay in your classroom, shut and lock/ barricade the door, turn off lights and stay quiet. Spread out and stay away from windows and silence cell phones (hide out). If you're confronted by the shooter, do whatever you can to aggressively protect yourself and survive (fight it out).

For a tornado warning, move to an interior room on the lowest possible floor; avoid windows.

COMPLY immediately with the directions of any emergency responders or University officials you may encounter.

Examples include evacuate from a specific building or location. A law-enforcement officer may also ask that you open your hands and place them where they can be seen.

WATCH for updates at alertcarolina.unc.edu or via text messages. Do not call 911 for general information.

It will take time – possibly hours – for police to provide additional instructions and updates. Remain inside. Watch for updates at alertcarolina.unc.edu or via text message. Only call 911 to report an emergency or provide information related to the emergency warning alert status on campus.

WAIT for the "all clear" siren or text message.

That means it's safe to resume normal operations. To listen to the siren tones, visit go.unc.edu/r2QJp

If you're in a location and can't hear the outdoor siren, wait for the "all clear" text message or posting on the Alert Carolina website.



alertcarolina.unc.edu,
your source for safety
announcements and updates



THE UNIVERSITY
of NORTH CAROLINA
at CHAPEL HILL



UNDESIRABLE No 1



HARRY POTTER

CONTACT THE MINISTRY OF MAGIC IMMEDIATELY IF YOU
HAVE ANY INFORMATION CONCERNING HIS WHEREABOUTS.
FAILING TO REPORT WILL RESULT IN IMPRISONMENT.



REWARD
10,000 GALLEONS ON HIS HEAD

Handwritten signature
DIRECTOR
MINISTRY POLICE

WANTED



NED KELLY

£2000!!

REWARD

For Capture of offenders Kellys and
two others increased for each offender

\$4,000 Reward

WILL BE PAID FOR THE CAPTURE OF ROBERT LEROY PARKER
DEAD OR ALIVE

Age, 36 years (1901)

Weight, 165 lbs.

Complexion, Light.

Eyes, Blue.

Nationality, American.

Marks, two cut scars back of head, small scar under left eye, small brown mole calf of leg.



Height, 5 ft. 9 in.
Build, Medium.
Color of hair, Flaxen.
Mustache, sandy if any.
Occupation,
Cowboy, Rustler.
Criminal occupation,
bank robber & Highwayman,
cattle and horse thief.

ROBERT LEROY PARKER
ALIAS

"BUTCH" CASSIDY

Is known as a criminal principally in Wyoming, Utah, Idaho, Colorado & Nevada and has served time in Wyoming State Penitentiary at Laramie for grand larceny, but was pardoned January 19, 1896. Wanted for robbery First National Bank, WINNEMUCCA, NEVADA, September 19, 1900.

WANTED!



ALPHONSE GABRIEL CAPONE ALIAS "AL CAPONE" or "SCARFACE" A REWARD OF \$10,000

Has been offered for information leading to the arrest of this notorious & ruthless Gangster who is currently wanted for Tax evasion and is rumored to be the mastermind behind the 1929 St. Valentine's day Massacre.

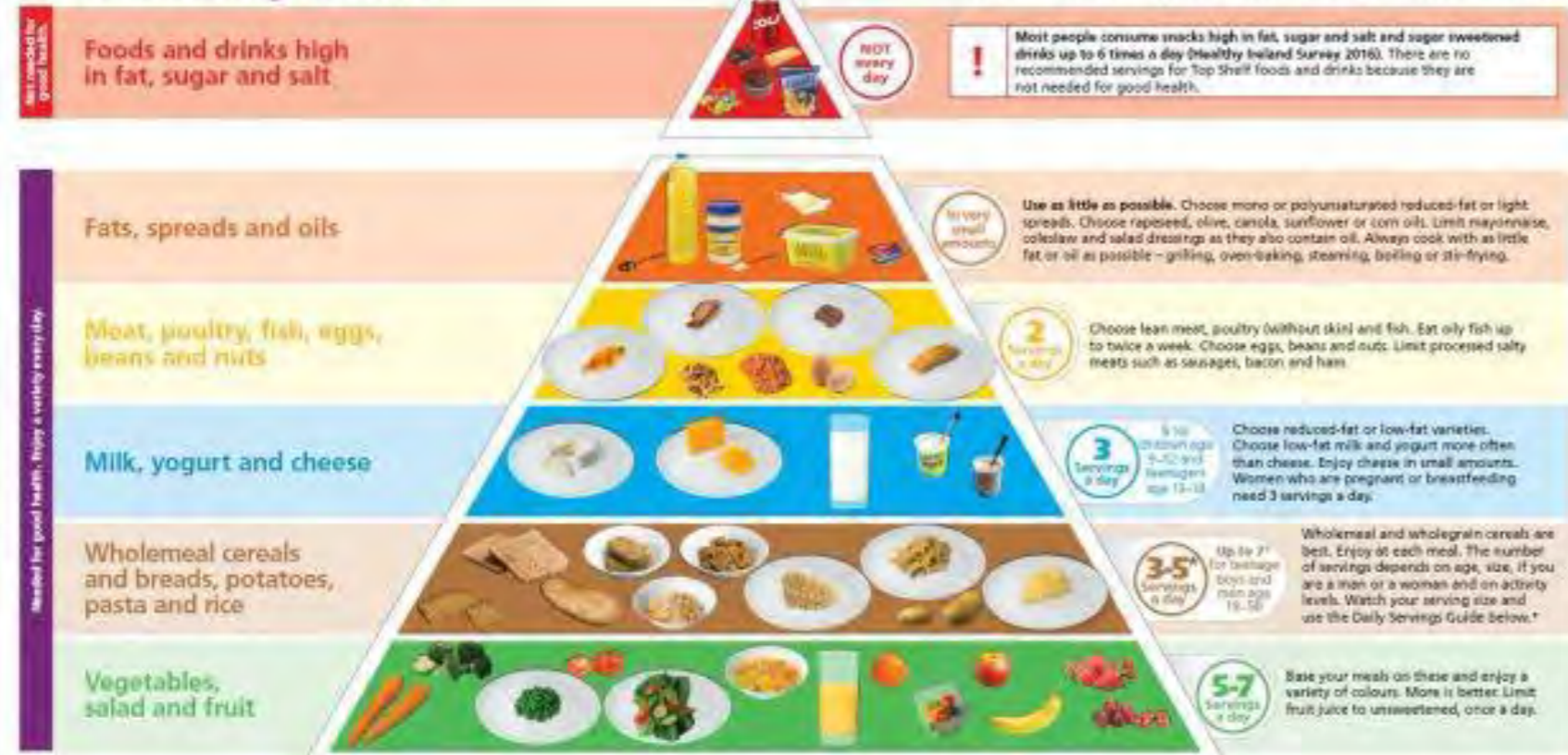
DESCRIPTION: Born Brooklyn, New York on January 17, 1899. Height: 5'9." Weight: 225 lbs. Hair: Black. Eyes: Brown. Complexion: Dark, Swarthy. Prominent scar along left cheek.

Issued June 28, 1929

Copyright The Andromeda Print Emporium

The Food Pyramid

For adults, teenagers and children aged five and over





HELLO!
My name is Steam Meter,
I'm going to be your guide.



You can see geothermal energy
when you look at a volcano.
I bet you've made model
volcano at school.

Space and Water Heating

Warm geothermal water (104°C or below boiling) can be used directly for space and water heating. Related uses are called District Heating and Geosubstituting. These uses are more widespread than hot geothermal fluids used in electrical power production.

Fossil Fuel Free

Geothermal systems provide a clean operation in which **no fossil fuels are burned**, thus, very low levels of greenhouse gases are emitted. Fossil fuels burned for energy are coal, oil, and gas.

Aquaculture - Fish Farming

Warming water through geothermal heat is used to help growth of smolt (young trout or salmon) at fish hatcheries. It is also used to grow grasses, oats, and even angsters (or rice fed).

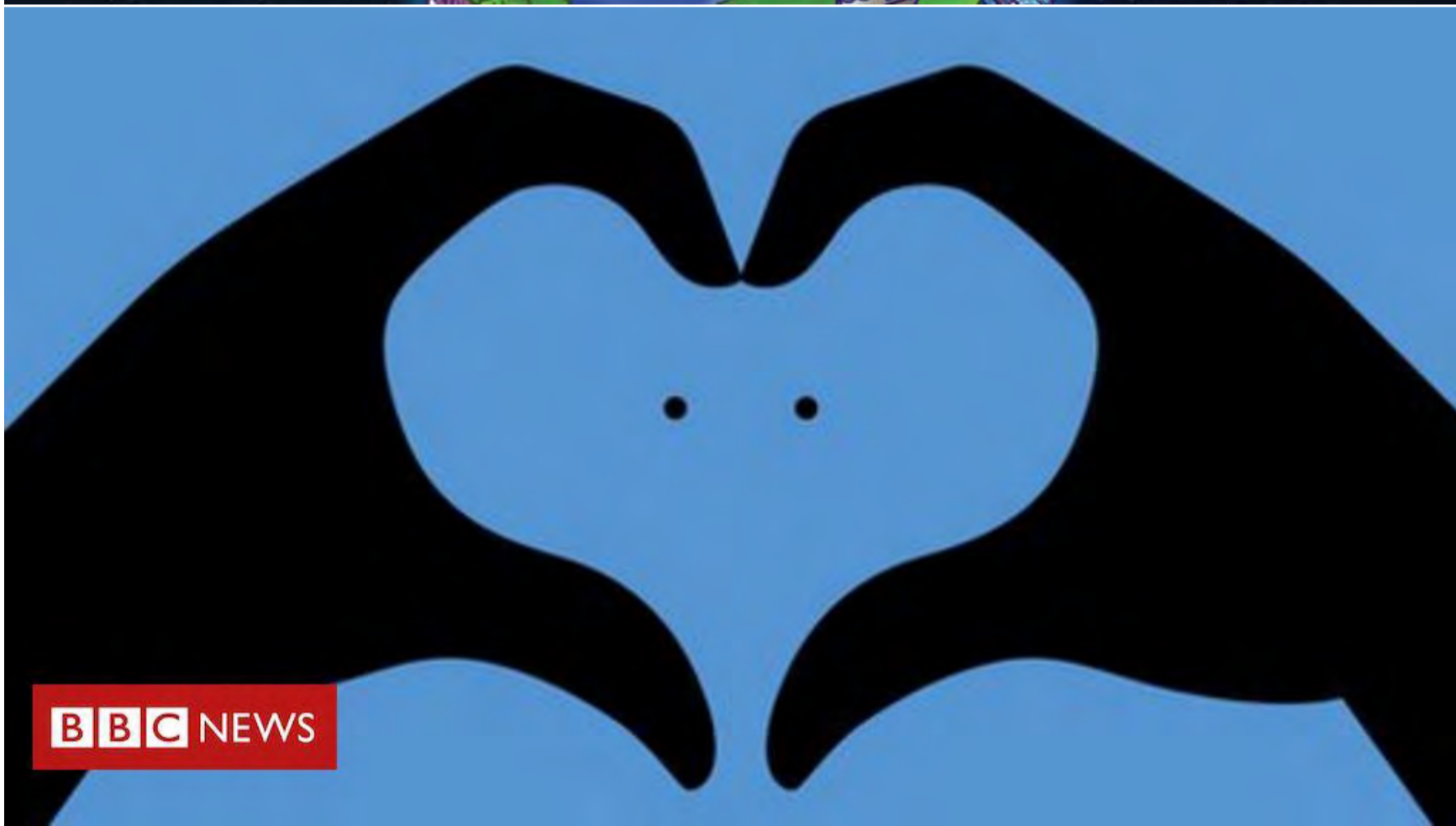
GEO THERMAL ENERGY For Everyone

Agriculture

Geothermally heated water, too cool to produce electrical power, can instead be used to **grow vegetables and ornamental flowers**. Iceland uses geothermal heat in greenhouses to grow vegetables and select fruits, mainly strawberries, **eliminating the need to import them and thereby reducing costs to consumers.**

Electrical Generation

When the temperature is 150°C or above, geothermal systems are able to **generate large-scale electricity to supply cities, and heavy industries** with a low environmental impact.





SYMBOLS

WARNINGS

Flammable	Harmful/Irritant	Harmful/Irritant	Poison/Toxic	Explosive
Biohazard	Oxidizer	Environmental Hazard	Radioactive	
Low Temperature	Laser Beam Hazard	High Voltage	Hot Surface	Eye Wash Station

CIRCUITS

Open Switch	Closed Switch	Lamp	Voltmeter
Ammeter	Resistor	LDR	Thermistor
Variable Resistor	Diode	LED	Fuse
Cell	Battery		



PLASTIC

The New Marine Life

No more trash in the ocean. It all starts with **you**.

The quantity of marine debris is increasing in oceans world-wide. Research shows that marine life that ingests plastics coated with pollutants can absorb these pollutants their bodies.

fishingforlitter.org

BRITISH WILDLIFE

 HARE The hare is a large mammal with long ears. It is found in grassy areas and eats plants. It is a prey animal for foxes and badgers.	 GREY SQUIRREL The grey squirrel is a common mammal found in woodlands. It eats nuts and seeds. It is a prey animal for foxes and badgers.	 BANK VOLE The bank vole is a small mammal found in grassy areas. It eats plants and insects. It is a prey animal for foxes and badgers.	 ADDER The adder is a venomous snake found in grassy areas. It is a predator of small mammals and birds.
 BADGER The badger is a large mammal found in grassy areas. It eats earthworms and insects. It is a prey animal for foxes and badgers.	 PIPISTRELLE BAT The pipistrelle bat is a small mammal found in grassy areas. It eats insects. It is a prey animal for foxes and badgers.	 SCOTTISH WILDCAT The Scottish wildcat is a large mammal found in grassy areas. It eats small mammals and birds. It is a prey animal for foxes and badgers.	 RED SQUIRREL The red squirrel is a common mammal found in woodlands. It eats nuts and seeds. It is a prey animal for foxes and badgers.
 RED DEER The red deer is a large mammal found in grassy areas. It eats plants. It is a prey animal for foxes and badgers.	 RABBIT The rabbit is a large mammal found in grassy areas. It eats plants. It is a prey animal for foxes and badgers.	 OTTER The otter is a large mammal found in grassy areas. It eats fish. It is a prey animal for foxes and badgers.	 MOLE The mole is a small mammal found in grassy areas. It eats earthworms and insects. It is a prey animal for foxes and badgers.
 DOLPHIN The dolphin is a large mammal found in grassy areas. It eats fish. It is a prey animal for foxes and badgers.	 FOX The fox is a large mammal found in grassy areas. It eats small mammals and birds. It is a prey animal for foxes and badgers.	 GREY SEAL The grey seal is a large mammal found in grassy areas. It eats fish. It is a prey animal for foxes and badgers.	 HEDGEHOG The hedgehog is a small mammal found in grassy areas. It eats insects. It is a prey animal for foxes and badgers.
 HARVEST MOUSE The harvest mouse is a small mammal found in grassy areas. It eats insects. It is a prey animal for foxes and badgers.	 STOAT The stoat is a small mammal found in grassy areas. It eats insects. It is a prey animal for foxes and badgers.	 PINE MARTIN The pine martin is a small mammal found in grassy areas. It eats insects. It is a prey animal for foxes and badgers.	 BUTTERFLY The butterfly is a small insect found in grassy areas. It eats plants. It is a prey animal for foxes and badgers.

Published by **Chartwell**
 1000 AND 10100 ALICE
www.chartwell.co.uk



THE PEOPLESWALK FOR WILDLIFE

A detailed black and white illustration of a badger's face, looking directly forward with its paws near its mouth. The illustration is set against a light, textured background.

YOUR WILDLIFE NEEDS
YOU

Richard Allen
richardallenillustrator.com
@richardallenart

SEPTEMBER 22nd LONDON 

Hyde Park. Gather 10am. Infotainment 12noon. Walk 1pm. Finish 2pm. chrispackham.co.uk

WHITE STAR LINE
ROYAL MAIL STEAMERS

FIRST SAILING OF THE LATEST ADDITION TO THE WHITE STAR FLEET
The Queen of the Ocean

TITANIC



This, the Latest, Largest, and Finest Steamer Afloat, will sail from
WHITE STAR LINE, PIER 10, SOUTHAMPTON

WEDNESDAY, APRIL 10TH



i'm lovin' it[®]

THE ANGUS THIRD POUNDER...GET YOURS TODAY!



i'm lovin' it

FREE PREMIUM CHICKEN SANDWICH
WITH PURCHASE OF SAME
*Grilled or Crispy

Limit 1 per customer, per visit. Offer not to be combined.
Cash value 1/10 of 1¢. Void if applicable.
Valid at participating participating locations through 04/30/2009.

GET A FREE BIG MAC[®] WHEN YOU VISIT LIMCDONALDS.COM AND REGISTER!





HEINZ TOMATO KETCHUP

A perfect relish!

It is made right—of superior materials—in clean kitchens—by people who know how to make good ketchup.

Free from Benzene of Soda or other drugs.

Keep a bottle on your table and add to the enjoyment of almost every other food served.

One of the **57** Varieties

All Heinz goods sold in Canada are made in Canada.





Fire Safety

Never play with matches or lighters.

They can be very dangerous and you could be badly burned.



Make sure that there are smoke alarms in your home.

Test them every week and change their batteries regularly.



Talk to your family about a fire escape plan.

Plan the quickest and safest way out of your home if there is a fire.



If you see smoke or a fire, tell a grown-up straight away.

If you are inside a building, get out as quickly as you can.



If your clothes catch on fire:

- 1) **Stop** what you are doing.
- 2) **Drop** to the ground.
- 3) **Roll** on the floor to put out the fire.



In the event of an emergency, call 999 and ask for the fire service.

Only call 999 if there is a real emergency.



Clothing Partners
www.clothingpartners.co.uk
© 2015, 11, 12, 13, 14, 15, 16, 17, 18, 19, 20, 21, 22, 23, 24, 25, 26, 27, 28, 29, 30, 31, 32, 33, 34, 35, 36, 37, 38, 39, 40, 41, 42, 43, 44, 45, 46, 47, 48, 49, 50, 51, 52, 53, 54, 55, 56, 57, 58, 59, 60, 61, 62, 63, 64, 65, 66, 67, 68, 69, 70, 71, 72, 73, 74, 75, 76, 77, 78, 79, 80, 81, 82, 83, 84, 85, 86, 87, 88, 89, 90, 91, 92, 93, 94, 95, 96, 97, 98, 99, 100

